



Marlborough Drive, Bushey, WD23 2GW  
Per Month £4,150 Per Month Council Tax Band G

**REAL ESTATES**  
Est.1981

Estate Agents · Residential Sales · Investments · Lettings

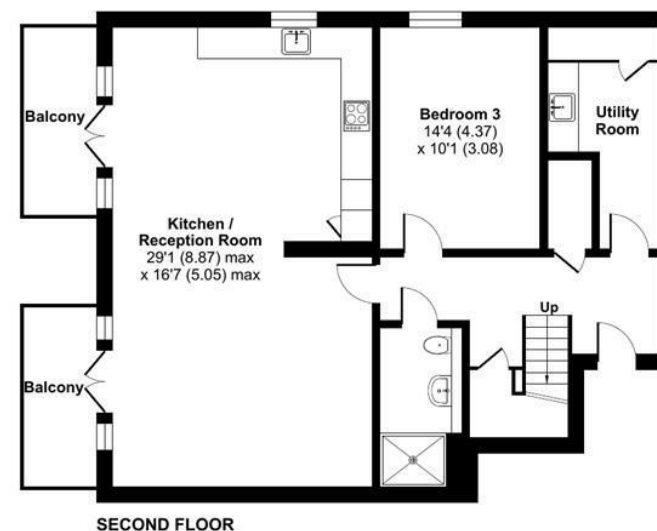
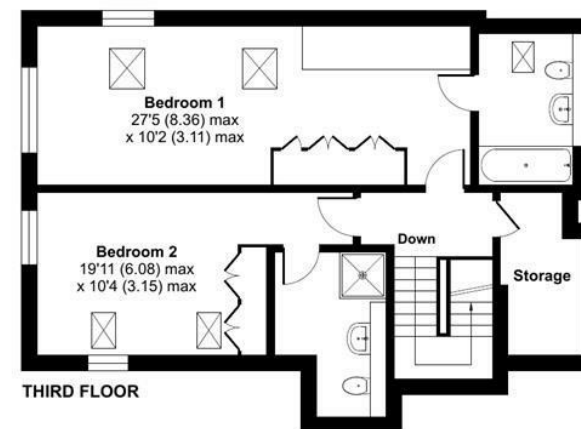
\* AVAILABLE NOW\* Real Estates are pleased to offer this three bedroom duplex apartment situated within the exclusive private Royal Connaught Park development, set within once hundred acres of stunning communal grounds, The development also benefits from a private indoor swimming pool, gym, tennis court, steam room and sauna, plus 24 a concierge & security service.

This flat benefits from easy access to local amenities, schools, and transport links, making it an excellent choice for both commuters and families alike. The surrounding area is known for its community spirit and green spaces.

## Marlborough Drive, Bushey, WD23

Approximate Area = 1675 sq ft / 155.6 sq m

For identification only - Not to scale



Energy Efficiency Rating		Current	Potential
Very energy efficient - lower running costs			
92-100	A	86	86
81-91	B		
69-80	C		
55-68	D		
39-54	E		
21-38	F		
1-20	G		
Not energy efficient - higher running costs			
England & Wales		EU Directive 2002/91/EC	

Floor plan produced in accordance with RICS Property Measurement 2nd Edition, Incorporating International Property Measurement Standards (IPMS2 Residential). © ncthem 2026. Produced for Real Estates. REF: 1454863